

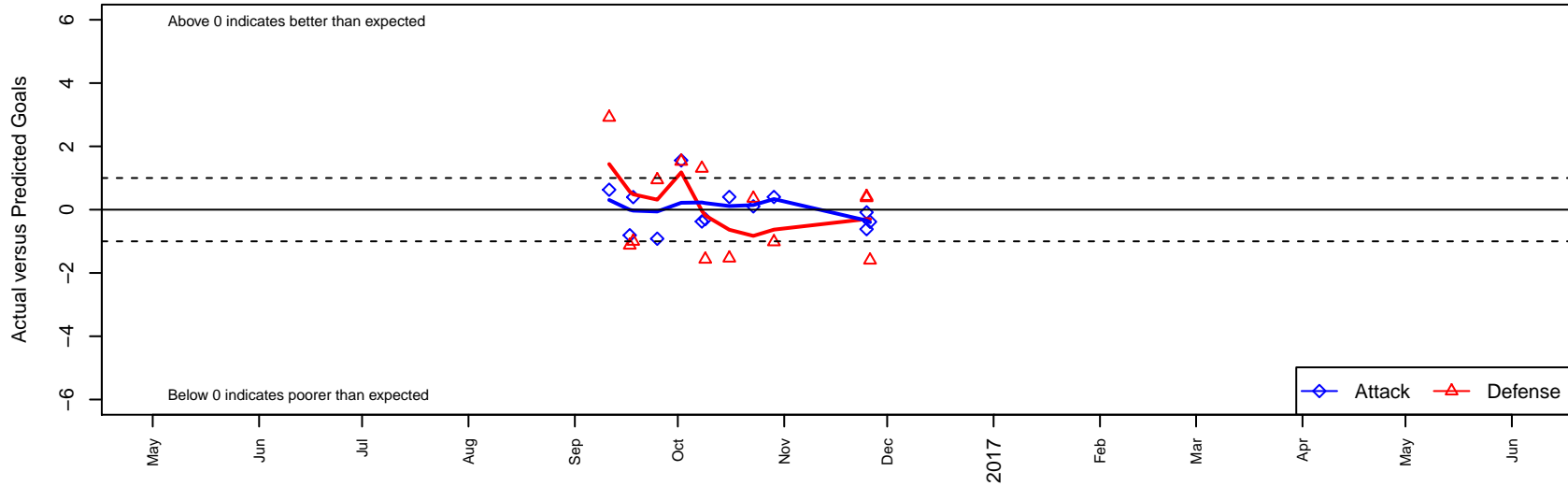
TFA FC Los Angeles Blue B01

Los Angeles, CAS
 B01 total strength=1613
 attack=18.49 defense=15.11
 fall league = SCDL FI1 U16

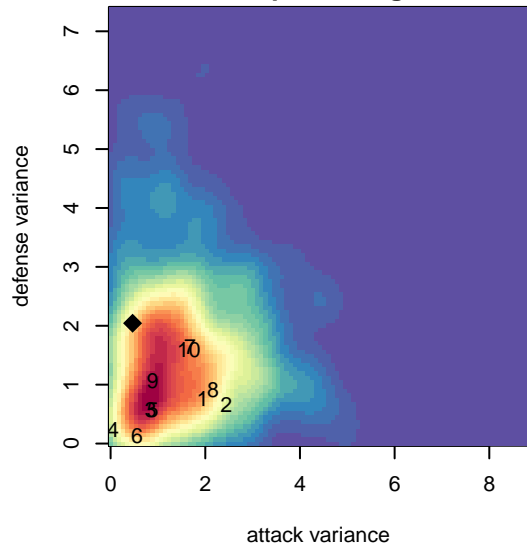
alt names used:
 TFA – FCLA 01 Blue
 TFA–FCLA B–01 Blue

Venues played:
 2016 SCDL FI1 U16
 2016 Nomads Thanksgiving 1st Division U16

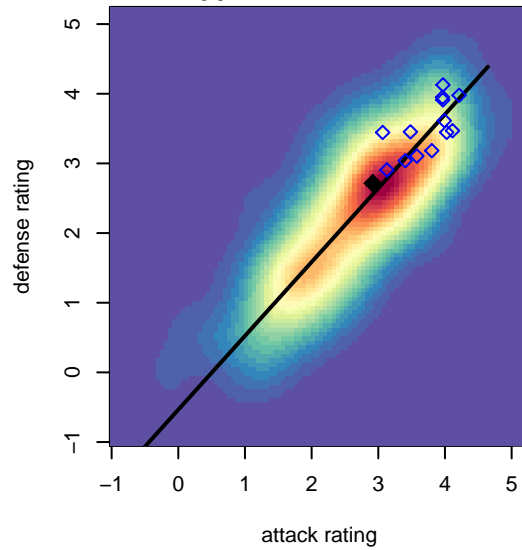
TFA FC Los Angeles Blue B01
 Dots are actual minus expected GF (blue circles) and GA (red triangles).
 Blue line is smoothed change in attack strength. Red is smoothed change in defense strength.



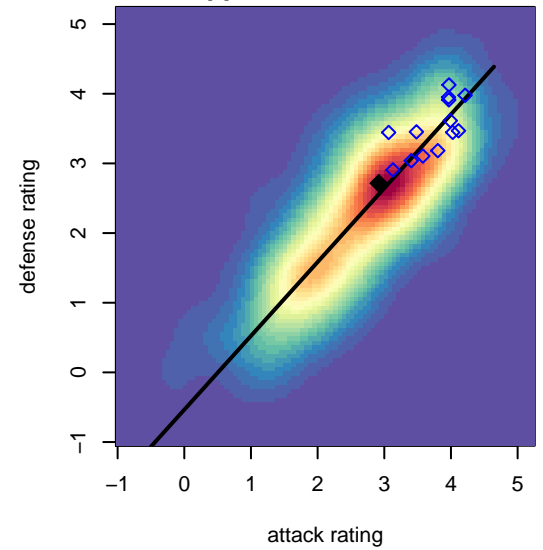
**attack and defense variance (black dot)
relative to other teams
and top 10 in region**



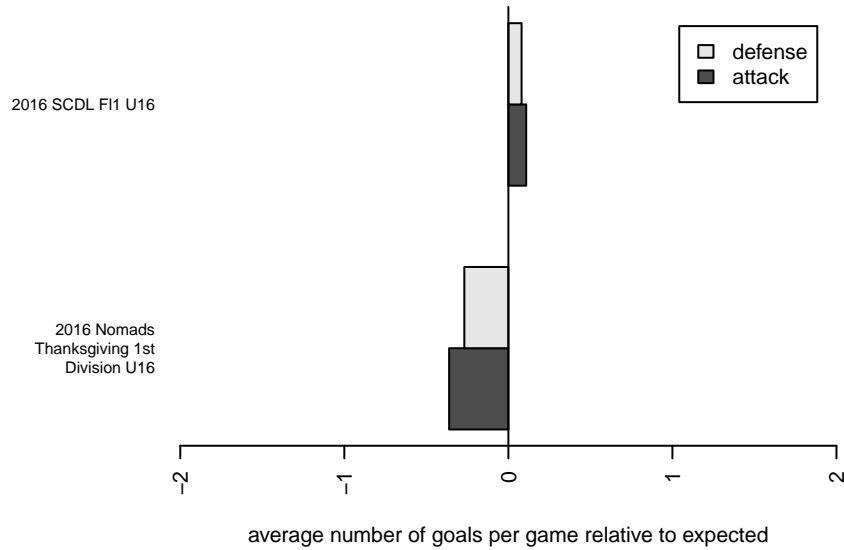
**attack and defense rating
relative to others at age
and all opponents in last 13 months**



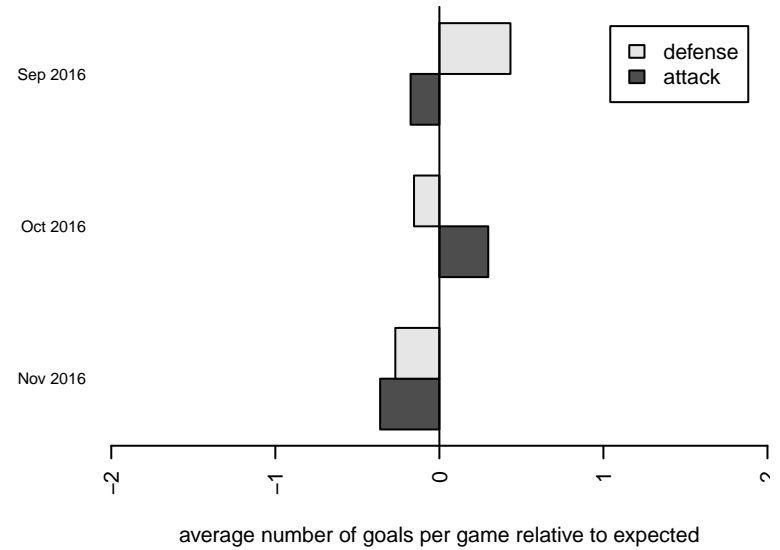
**attack and defense rating
relative to others at age
and all opponents in last 13 months**



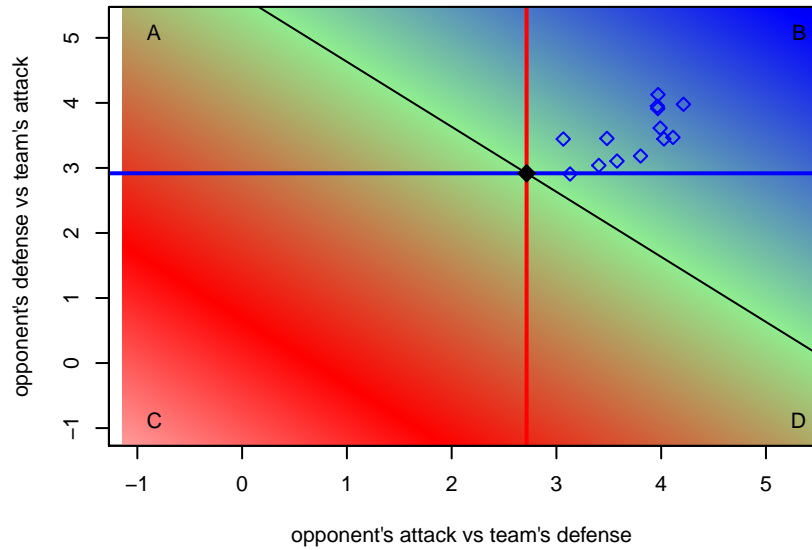
Performance relative to 13 month average



Performance relative to 13 month average



Distribution of opponents
 Red = Lose zone, Blue = Win zone, Green = Even
 Black line separates win/lose zones



lot. A=Neither has attack advantage, B=Opponent has both attack and defense advantage, C=Opponent has both attack and defense disadvantage, D=Both have

ate	home		away		venue	pred.home	pred.av
i-11-26	Union Sacramento FC B01	5	TFA FC Los Angeles Blue B01	0	2016 Nomads Thanksgiving 1st Division U1	3.40	0.38
i-11-25	TFA FC Los Angeles Blue B01	0	Fullerton Rangers White B01	1	2016 Nomads Thanksgiving 1st Division U1	0.62	1.38
i-11-25	Pateadores Huntington Beach B01	1	TFA FC Los Angeles Blue B01	1	2016 Nomads Thanksgiving 1st Division U1	1.42	1.08
i-10-29	Los Angeles United FA Pre-Academy B01	5	TFA FC Los Angeles Blue B01	1	2016 SCDL FI1 U16	3.98	0.60
i-10-23	TFA FC Los Angeles Blue B01	1	West Coast FC Cloutier B01	2	2016 SCDL FI1 U16	0.90	2.36
i-10-16	TFA FC Los Angeles Blue B01	1	Arsenal FC Academy USSDA B01	5	2016 SCDL FI1 U16	0.60	3.47
i-10-09	TFA FC Los Angeles Blue B01	0	Strikers FC Irvine B01	5	2016 SCDL FI1 U16	0.30	3.43
i-10-08	TFA FC Los Angeles B01	2	TFA FC Los Angeles Blue B01	0	2016 SCDL FI1 U16	3.30	0.37
i-10-02	West Coast FC B01	2	TFA FC Los Angeles Blue B01	2	2016 SCDL FI1 U16	3.53	0.44
i-09-25	Pateadores IER B01	1	TFA FC Los Angeles Blue B01	0	2016 SCDL FI1 U16	1.94	0.92
i-09-18	Pateadores Irvine B01	3	TFA FC Los Angeles Blue B01	1	2016 SCDL FI1 U16	2.00	0.60
i-09-17	TFA FC Los Angeles Blue B01	0	Strikers FC SB Black B01	4	2016 SCDL FI1 U16	0.81	2.88
i-09-11	TFA FC Los Angeles Blue B01	1	San Diego Surf SC Academy I B01	2	2016 SCDL FI1 U16	0.37	4.92